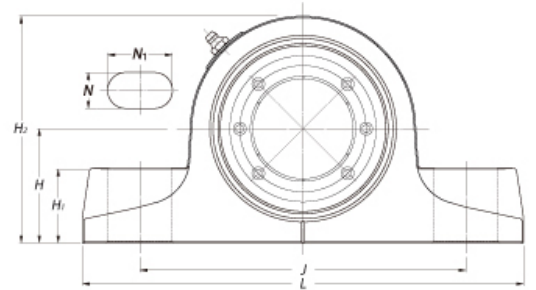
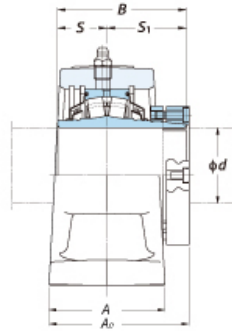




ZS2P415



样式		
轴承座型号	2P415	
轴承公称型号	ZS415	
轴径	75 mm	
轴承座固定螺栓	M20	3/4 in
轴固定方法	Z LOCK	
适用油嘴	A-NPT1/8	
主要尺寸		
H	82.6 mm	3-1/4 in
L	265 mm	10-7/16 in
A	76 mm	3 in
J	210 mm	8-9/32 in
N	24 mm	15/16 in
N1	32 mm	1-9/32 in
H1	48 mm	1-7/8 in
H2	162 mm	6-3/8 in
A0	97 mm	3-13/16 in
B	91.3 mm	3.594 in
S	31.8 mm	1.252 in
S1	59.5 mm	2.343 in
基本额定负荷		
C_r	186.8 kN	42032 lbf
C_{0r}	244.4 kN	54986 lbf